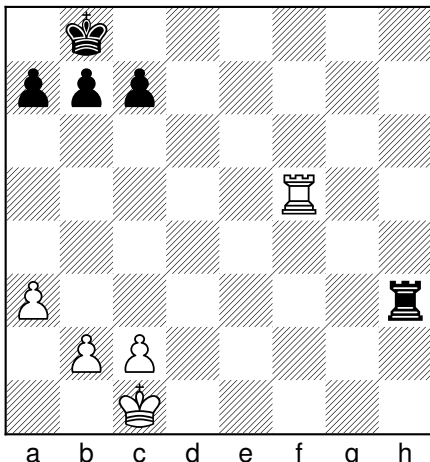


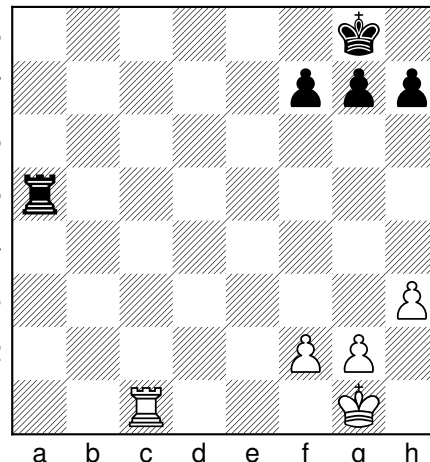
# Matt på bakre raden

Namn: .....

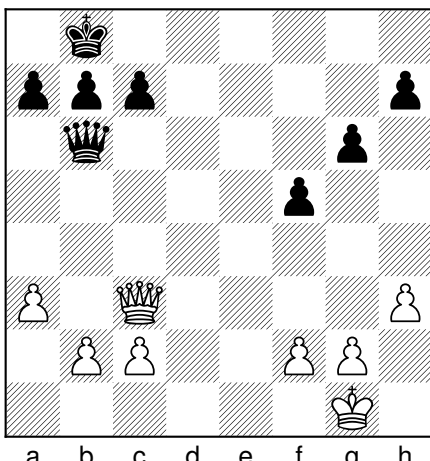
Vit drar och gör matt i ett eller två drag. **Skriv eller rita** dragen!

1)  △

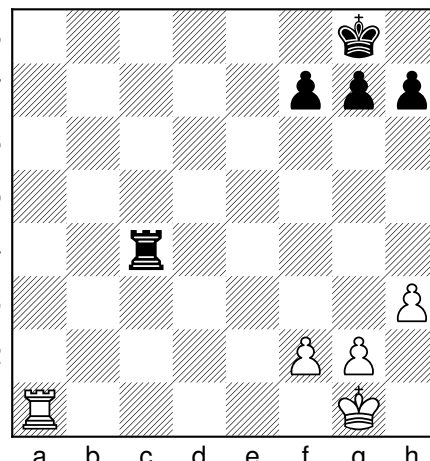
1. ....

2)  △

1. ....

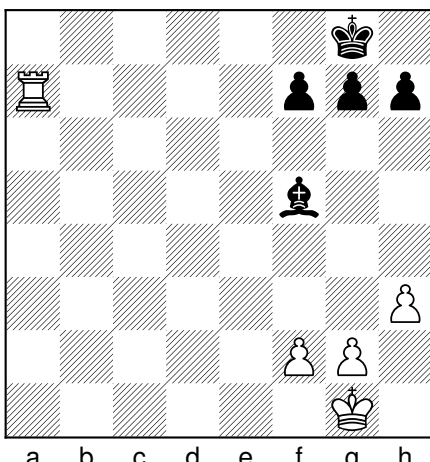
3)  △

1. ....

4)  △

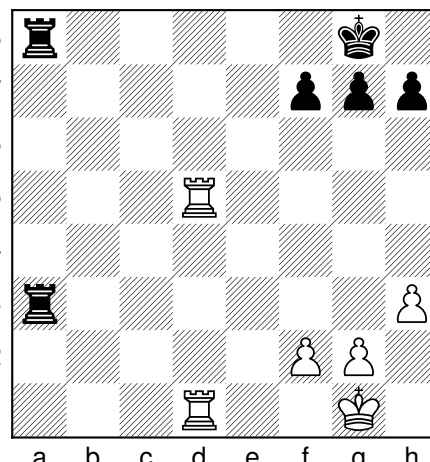
1. ....

2. ....

5)  △

1. ....

2. ....

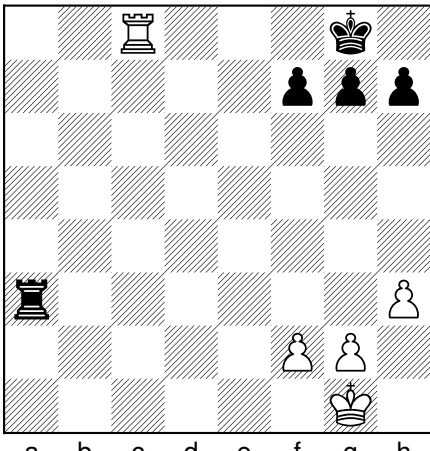
6)  △

1. ....

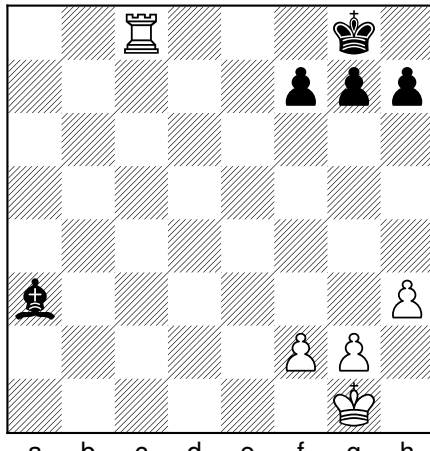
2. ....

# Matt på bakre raden

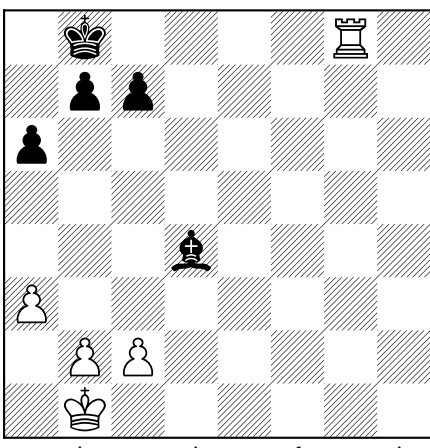
## Är svart matt?

7)   Ja  Nej (rita svarts drag!)

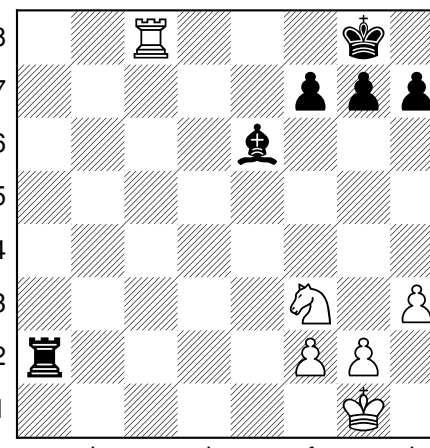
The chessboard for problem 7 shows a position where White is to move. The pieces are: White King on g1, White Queen on a3, White Rook on c8, White Pawns on f2, g2, h3, and White Pawns on f7, g7, h7. Black pieces are: Black King on g8, Black Pawns on f7, g7, h7.

8)   Ja  Nej (rita svarts drag!)

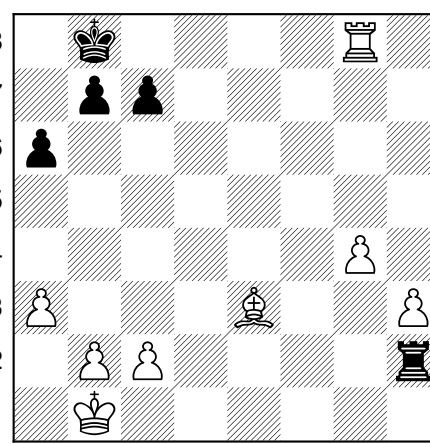
The chessboard for problem 8 shows a position where White is to move. The pieces are: White King on g1, White Queen on b3, White Rook on c8, White Pawns on f2, g2, h3, and White Pawns on f7, g7, h7. Black pieces are: Black King on g8, Black Pawns on f7, g7, h7.

9)   Ja  Nej (rita svarts drag!)

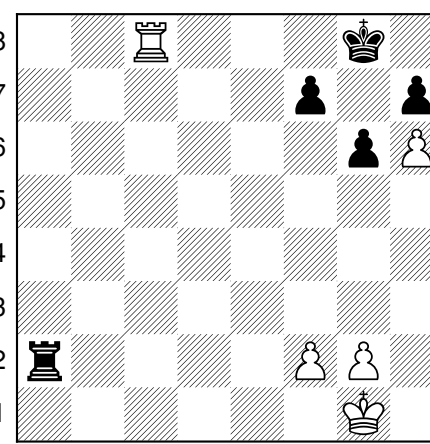
The chessboard for problem 9 shows a position where White is to move. The pieces are: White King on g1, White Queen on a3, White Rook on h8, White Pawns on b2, c2, and White Pawns on a6, b7, c7. Black pieces are: Black King on g8, Black Pawns on a6, b7, c7.

10)   Ja  Nej (rita svarts drag!)

The chessboard for problem 10 shows a position where White is to move. The pieces are: White King on g1, White Queen on a2, White Rook on a8, White Knight on f3, White Pawns on f2, g2, and White Pawns on f7, g7, h7. Black pieces are: Black King on g8, Black Pawns on f7, g7, h7.

11)   Ja  Nej (rita svarts drag!)

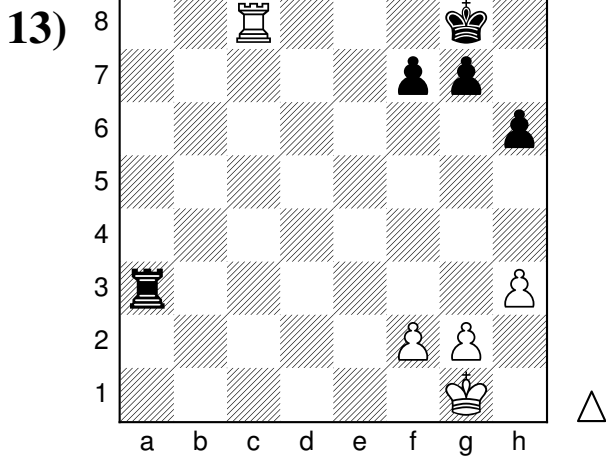
The chessboard for problem 11 shows a position where White is to move. The pieces are: White King on g1, White Queen on a3, White Rook on h8, White Bishop on e3, White Pawns on a3, g3, and White Pawns on b2, c2. Black pieces are: Black King on g8, Black Pawns on a6, b7, c7.

12)   Ja  Nej (rita svarts drag!)

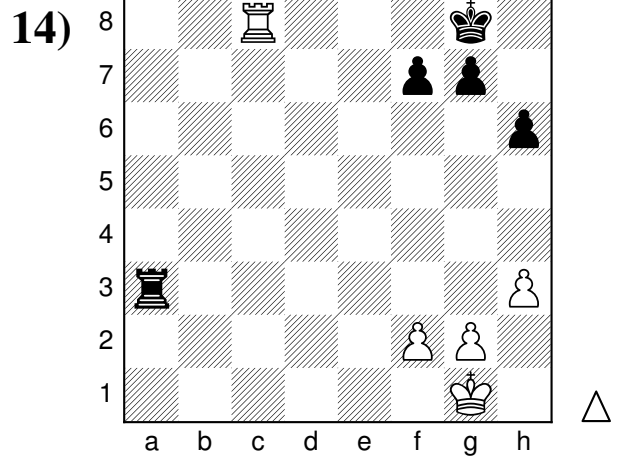
The chessboard for problem 12 shows a position where White is to move. The pieces are: White King on g1, White Queen on a2, White Rook on a8, White Pawns on f2, g2, and White Pawns on f6, g6, h6. Black pieces are: Black King on g8, Black Pawns on f7, g7, h7.

# Matt på bakre raden

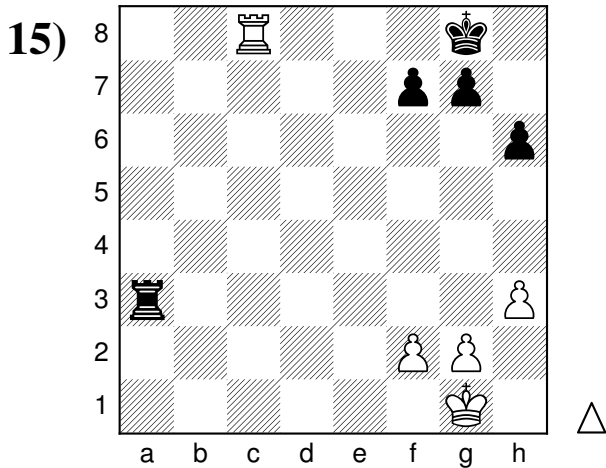
Skapa matt! Sätt in en vit pjäs så att svart blir matt.  
Markera rutan med ett kryss.



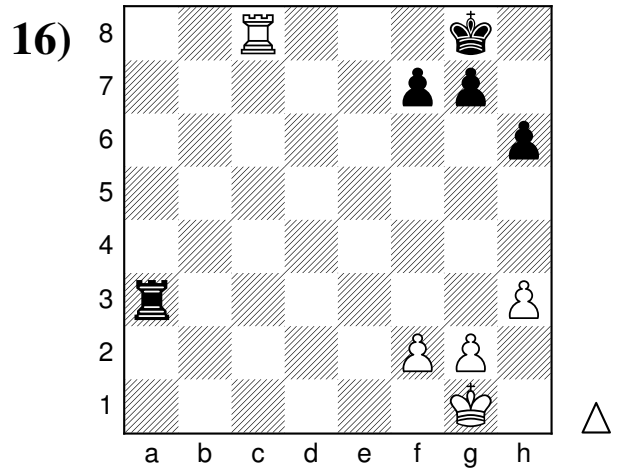
Sätt in en vit löpare(♘)!



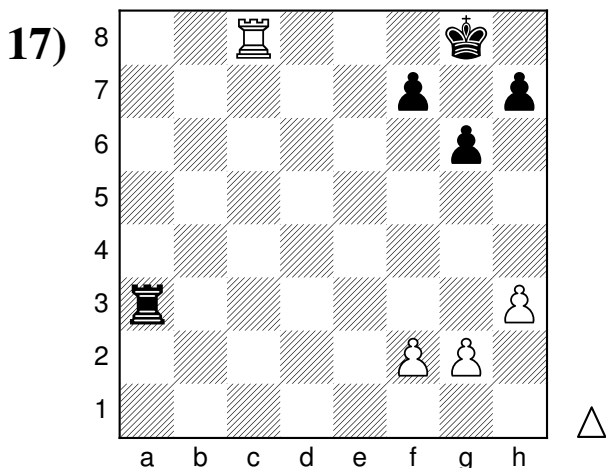
Sätt in en vit springare(♞)!



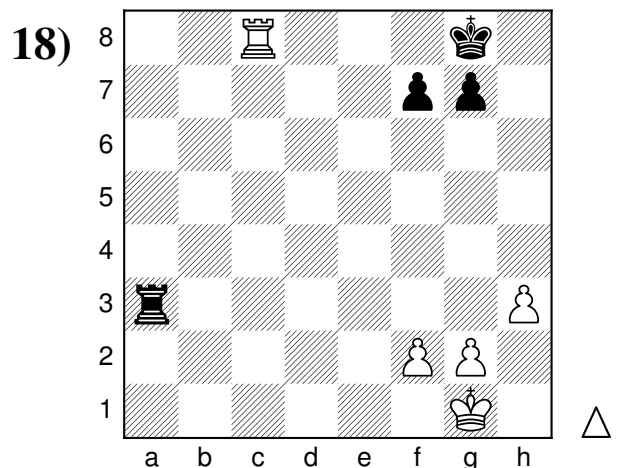
Sätt in en vit bonde(♙)!



Sätt in en vit dam(♚)!



Sätt in en vit kung(♔)!



Sätt in ett vitt torn(♖)!

# Matt på bakre raden

---

## Lösningar

1. **1.Tf8#**
2. **1.Tc8#**
3. **1.Dh8#**
4. **1.Ta8+ Tc8 2.Txc8#**
5. **1.Ta8+ Lc8 2.Txc8#**
6. **1.Td8+ Txd8 2.Txd8#**
7. **Ja, det är matt!**
8. **Nej, svart spelar 1...Lf8** (Svart ställer emellan.)
9. **Nej, svart spelar 1...Ka7** (Svarts kung smiter.)
10. **Nej, svart spelar 1...Lxc8** (Svart slår pjäsen som schackar.)
11. **Ja, det är matt!** (Svarts kung kan **inte** smita till a7 eftersom vits löpare täcker den rutan.)
12. **Ja, det är matt!** (Svarts kung kan **inte** smita till g7 eftersom vits bonde täcker den rutan.)
13. Flera möjliga svar: Löpare på **b1** (eller c2, d3, e4, f5 eller g6)
14. Flera möjliga svar: Springare på **g5** eller **f6**.
15. Bonde på **g6**.
16. Flera möjliga svar: Dam på **b1** (eller c2, d3, e4, f5, g6 eller h8)
17. Två möjliga svar: Kung på **h6** eller **f6**.
18. Två möjliga svar: Kung på **h4** eller **h5**. (**h8** är också rätt)